

# TRIMARK

A woman with long brown hair is wearing a dark blue hooded raincoat. She has her arms outstretched and is smiling, with her eyes closed. The raincoat is covered in water droplets, suggesting it is raining. The background is a soft, out-of-focus outdoor scene.

[www.thecatalogue.co.nz](http://www.thecatalogue.co.nz)



# STYLE INDEX

STYLE NAME INDEX		STYLE NUMBER INDEX			
NAME	PAGE	STYLE	PAGE	STYLE	PAGE
JACKETS & VESTS					
Whistler	2	12604	24	92604	24
Silverton	4	12605	22	92605	22
Rougemont	6	12713	20	92713	20
Gearhart	8	12723	18	92723	18
Index	10	12936	10	92936	10
Oracle	12	12938	8	92938	8
Bryce	14	12939	12	92939	12
Maxson	16	16209	36	96209	36
Ansel	18	16255	34	96255	34
Cascade	20	17807	30	97807	30
Egmont	22	17810	32	97810	32
Flint	24	18610	26	98610	26
		18731	28	98731	28
FLEECE & KNITS					
Tremblant	26	19531	14	99531	14
Garner	28	19543	16	99543	16
Caltech	30	19547	6	99547	6
Taza	32	19652	4	99652	4
		19898	2	99898	2
		19899	2	99899	2
POLOS					
Mori	34				
Kiso	36				

Images from this catalogue cannot be reproduced without the written permission of the publisher, except by the owner or licensee of such names and logos. Whilst every effort is made to ensure the accuracy of colour representation in this catalogue, they should be used as a guide only. All embroidery and screenprinting shown is for indicative purposes only. Garments are supplied plain.

# Jackets & Vests



WOMENS  
VEST



945 Steel Grey

MENS JACKET



358 Team Red



279 Orange



561 New Royal



995 Black

## whistler light down vest

19898 Men's (S - 3XL)  
99898 Women's (XS - 2XL)

## light down jacket

19899 Men's (S - 3XL)  
99899 Women's (XS - 2XL)

### features

- › Interior storm flap with chin guard
- › Easy grip zipper pull
- › Upper and lower exposed contrast coil zipper pockets
- › Zipper pocket garage
- › Dropped back hem (women's)

### fabric

Outer Shell: 100% Polyester dull cire 380T, water repellent and downproof. 38 g/m<sup>2</sup> (1.1 oz/yd<sup>2</sup>).

Lining: 100% Polyester dull cire 380T lining and pocket bags.

Insulation: 80% Down, 20% Feathers fill total of body, sleeves and collar.

### recommended decoration

**E** Embroidery **T** Transfer



THERMALTECH



BREATHABLE



WIND  
RESISTANT





LED zipper pull



ECHO HEAT™

The special ECHOHEAT™ lining keeps you warm by reflecting and retaining heat - all without adding extra weight.

## silverton packable insulated jacket

19652 Men's (S - 5XL)

99652 Women's (XS - 3XL)

up to  
5XL

VERY COLD -5°C TO -19°C

### features

- › Packable into left pocket sack
- › Centre front exposed plastic zipper with contrast tape and teeth
- › Interior media exit port with cord guide
- › Zipper garage pocket feature
- › Ergonomic sleeves
- › Elasticized cuffs
- › LED zipper pull
- › Elastic drawcord at hem with interior cordlocks
- › Interior zipper flap with chin guard

### fabric

Outer Shell: 100% Nylon dull cre 380T woven, water repellent 600mm and downproof, 38 g/m² (1.1 oz/yd²).

Lining: 100% Polyester 240 ECHOHEAT body and hood, 100% Polyester taffeta 210T cre finish.

Insulation: 100% Polyester faux down fill.

### recommended decoration

**E** Embroidery **T** Transfer



### IN THE DETAILS.

The Silverton is packable, so you can wear it out the door when you need to, or pack it in the stuff sack and stow it away.

### WOMENS

packable into  
left pocket sack



interior zipper  
flap with chin  
guard



431 Olympic Blue



358 Team Red



270 Saffron



995 Black



938 Quarry



573 Vintage Navy

# IT'S THE BEST OF BOTH WORLDS

That's the beauty of a hybrid. The protection of a jacket with a little added stretch so you can move freely.



991 Grey Storm/Black



WOMENS  
BACK VIEW

Shaped seams  
and tapered waist  
for flattering fit  
(womens only)



BACK VIEW



438 Invictus/Black



935 Light Grey/Black



995 Black/Black



384 Maroon/Black



684 Loden/Black



Sleeve thumb  
hole exit

## rougemont hybrid insulated jacket

19547 Men's (S - 5XL)  
99547 Women's (XS - 3XL)

up to  
5XL

### features

- > Interior media pocket with exit port with cord guide
- > Sleeve cuffs with thumb exit
- > Binding on cuffs and hem
- > Dropped back hem
- > Easy grip zipper pulls
- > Brushed inner collar detail
- > System loops at neck and lower sleeves
- > Interior storm flap with chin guard
- > Pockets and centre front with exposed contrast plastic zippers
- > Lower exposed contrast plastic zipper pockets

### fabric

Outer Shell: 100% Nylon dull cire 380T woven, water repellent (600mm) and downproof. 38g/m2(11 oz/yd²). 100% Polyester knit with DWR finish.

Lining: 100% Polyester faux down fill.

### recommended decoration

**E** Embroidery **T** Transfer



WATER  
REPELLENT  
600mm



WIND  
RESISTANT



## gearhart softshell jacket

**12938** Men's (S - 5XL)

**92938** Women's (XS - 3XL)

### features

- › Centre front laminated exterior storm flap
- › Lower exposed contrast waterproof zipper pockets
- › Interior pocket with hook and loop closure
- › Interior media pocket
- › Detachable snap off hood with drawcord and interior cordlocks
- › Adjustable laminated cuff tabs with molded plastic closure
- › Easy grip zipper pulls
- › Heat transfer main label for tagless comfort
- › Heat transfer reflective graphic detail
- › Interior media exit port with cord guide
- › Welded reflective bartacks
- › Critical seam sealed
- › Articulated elbows
- › Ergonomic sleeves
- › Interior system snap tabs for liner add in
- › Laminated peak

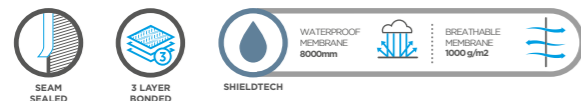
### fabric

Outer Shell: 100% Polyester mechanical stretch ripstop woven bonded to 100% Polyester tricot knit with waterproof (8000mm), breathable (1000g/m<sup>2</sup>) membrane and water repellent finish, 135 g/m<sup>2</sup> (4 oz/yd<sup>2</sup>).

Lining: 100% Polyester brushed tricot knit.

### recommended decoration

**E** Embroidery **T** Transfer **D** Deboss **L** Laser



Adjustable cuff tabs with molded plastic closure

**369** Vintage Red



**UNDERARM EXPOSED  
REVERSE COIL  
VENTILATION ZIPPERS**

## YOUR NEW BEST FRIEND ON RAINY DAYS



Contrast brushed inner collar detail

Arrich

# index softshell jacket

**12936** Men's (S - 3XL; 4XL; 5XL\*)

**92936** Women's (XS - 2XL; 3XL\*)

## features

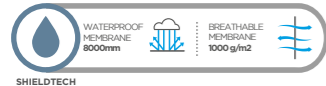
- > Center front exposed contrast waterproof zipper
- > Interior zipper flap and chin guard
- > Contrast waterproof zipper pockets
- > Interior media pocket and exit port
- > Hood with elastic drawcord and exterior cordlocks
- > Adjustable laminated cuff tabs with hook and loop closure
- > Drop back hem
- > Fully seamed sealed
- > Articulated elbows
- > Zipper garage pocket feature
- > Laminated peak

## fabric

Outer Shell: 100% Polyester woven bonded to 100% Polyester heather jersey knit with waterproof (8000mm), breathable (1000g/m<sup>2</sup>) membrane and water repellent finish 236g/m<sup>2</sup> (7 oz/yd<sup>2</sup>).

## recommended decoration

**E** Embroidery **T** Transfer **D** Deboss **L** Laser



995 Black\*



369 Vintage Red



561 New Royal\*



270 Saffron

Shaped seams  
and tapered waist  
for flattering fit  
(womens only)

# RAIN ON ME

Our waterproof Index Softshell Jacket keeps you comfortable in cold, wet conditions



# oracle softshell jacket

12939 Men's (S - 5XL)  
92939 Women's (XS - 3XL)

up to  
5XL

- features**
- › Centre front exposed contrast reverse coil zipper
  - › Interior laminated storm flap with chin guard
  - › Lower welded contrast reverse coil zipper pockets
  - › Interior pocket with hook and loop closure
  - › Interior media pocket
  - › Detachable snap off hood with contrast binding on hood opening
  - › Laminated contoured cuffs with contrast binding
  - › Contrast heat transfer graphic detail
  - › Contrast welded detail
  - › Interior media exit port with cord guide
  - › Critical seam sealed
  - › Articulated elbows
  - › Ergonomic sleeves
  - › Contrast brushed inner collar detail
  - › Back vent
  - › Interior system snap tabs for liner add in
  - › Laminated peak

**fabric**  
Outer Shell: 100% Polyester mechanical stretch woven bonded to 100% Polyester graphic pattern knit with waterproof (8000mm), breathable (500g/m²) membrane and water repellent finish, 215 g/m²(6.3 oz/yd²).

Lining: 100% Polyester brushed tricot knit.

**recommended decoration**

**E** Embroidery   **T** Transfer   **D** Deboss   **L** Laser



995 Black



358 Team Red



991 Grey Storm



561 New Royal

Graphic camo pattern interior



Zipper doubles as a whistle

**WOMENS**





## 3 layer bonded

Three materials of differing characteristics, are joined together, creating a composite fabric with superior performance.



# bryce

## insulated softshell jacket

**19531** Men's (S - 5XL)  
**99531** Women's (XS - 3XL)

up to  
**5XL**

### features

- › Center front exposed coil zipper
- › Centre front easy grip zipper pull with interior storm flap
- › Lower exposed coil zipper pockets
- › Upper exposed coil zipper
- › Interior mesh stowable pocket with velcro closure
- › Detachable zip off contour hood with drawcord and exterior cordlocks

### fabric

Outer Shell: 100% Polyester mechanical stretch woven bonded to 100% Polyester interlock with waterproof, breathable membrane and water repellent finish. 255g/m<sup>2</sup> (7.5 oz/yd<sup>2</sup>).

Lining: 100% Polyester taffeta body.  
100% Polyester brushed tricot knit pocket bags.  
100% Polyester mesh interior pocket.

Insulation: 100% Polyester soft body. 100g/m<sup>2</sup> (3 oz/yd<sup>2</sup>).  
100% Polyester soft fill sleeves and collar. 80g/m<sup>2</sup> (2.4 oz/yd<sup>2</sup>).  
100% Polyester soft fill hood. 60 g/m<sup>2</sup> (1.8 oz/yd<sup>2</sup>).

### recommended decoration

**E** Embroidery **T** Transfer **D** Deboss **L** Laser



SEAM  
SEALED



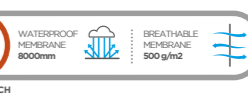
STRETCH



DECORATION  
ACCESS



THERMALTECH



WATERPROOF  
MEMBRANE  
8000mm

BREATHABLE  
MEMBRANE  
500 g/m<sup>2</sup>



575 Navy



990 Charcoal



955 Black

# PROVIDING PROTECTION FROM THE ELEMENTS

## BREATHABLE THREE-LAYER CONSTRUCTION



561 New Royal



640 Forest

### maxson softshell jacket

**19534** Men's (S - 5XL)  
**99534** Women's (XS - 3XL)

- features**
- › Centre front exposed contrast reverse coil zipper
  - › Interior zipper flap
  - › Lower welt pockets with coil zipper
  - › Articulated elbows
  - › Ergonomic sleeves

**fabric**

Outer Shell: 100% Polyester mechanical stretch woven bonded to 100% Polyester anti-pill microfleece with waterproof (8000mm), breathable membrane (400 g/m2) and water repellent finish, 270 g/m2 (8 oz/yd2).

Lining: 100% Polyester brushed tricot knit upper storm flap and pocket bags.

**recommended decoration**

**E** Embroidery   **T** Transfer   **D** Deboss   **L** Laser



STRETCH



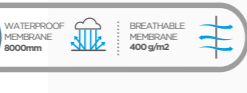
3 LAYER BONDED



WIND RESISTANT



SHIELDTECH



WATERPROOF  
MEMBRANE  
8000mm

BREATHABLE  
MEMBRANE  
400 g/m2

up to  
5XL



358 Team Red



995 Black



431 Olympic Blue



575 Navy



991 Grey Storm



# ansel jacket

**12723** Men's (S - 3XL)

**92723** Women's (XS - 2XL)

## features

- › Critical seam sealed
- › Easy grip zipper pull
- › Detachable snap off hood with drawcord and exterior cordlocks
- › Articulated elbows
- › Contrast inner hood

## fabric

Outer Shell: 100% Polyester dobby 310T with waterproof (600mm), breathable (500g/m<sup>2</sup>) and water repellent finish 100g/m<sup>2</sup> (3 oz/yd<sup>2</sup>).

Lining: 100% Polyester taffeta body, sleeves, hood and pocket bags. 100% Polyester mesh inner side body panels and interior pocket.

## recommended decoration

**E** Embroidery **T** Transfer



WIND  
RESISTANT



SEAM  
SEALED



DECORATION  
ACCESS



SHIELDTECH

WATERPROOF  
COATING  
600mm

BREATHABLE  
COATING  
500g/m<sup>2</sup>

SHIELDTECH

women's two  
way zipper



995 Black

991 Grey Storm

## BACK VIEW



431 Olympic Blue

575 Navy



INTERIOR  
STORM FLAP  
WITH RAIN  
GUTTER AND  
CONTRAST  
BARTACKS



# cascade jacket

**12713** Men's (S - 3XL; 4XL-5XL\*)

**92713** Women's (XS - 3XL)

## features

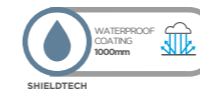
- › Center front exposed waterproof zipper
- › Interior zipper flap
- › Hood with elastic drawcord and exterior cordlocks
- › Adjustable cuff tabs with hook and loop closure
- › Drop back hem
- › Fully seamed sealed
- › Hanger loop at inside back neck

## fabric

Outer Shell: 100% PU-coated Polyester twill woven waterproof (1000mm), 125g/m<sup>2</sup> (3.7 oz/yd<sup>2</sup>).

## recommended decoration

**E** Embroidery **T** Transfer



Shaped seams  
and tapered waist  
for flattering fit  
(womens only)



431 Olympic Blue

## BACK VIEW

Heat transfer  
reflective graphic  
detail



431 Olympic Blue



## egmont packable jacket

**12605** Men's (S - 5XL)

**92605** Women's (XS - 3XL)

### features

- › Centre front exposed contrast reverse coil zipper
- › Lower concealed reverse coil zipper pockets
- › Diminishing contrast piping on thumb exit
- › Contrast binding detail on raglan seams
- › Articulated elbows
- › Ergonomic sleeves

### fabric

Outer Shell: 100% Polyester 240T with water resistant coating and water repellent finish. 80 g/m² (2.4 oz/yd²).

### recommended decoration

**E** Embroidery **T** Transfer **D** Deboss



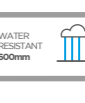
SEAM  
SEALED



DECORATION  
ACCESS



SHIELDTECH



WATER  
RESISTANT  
600mm

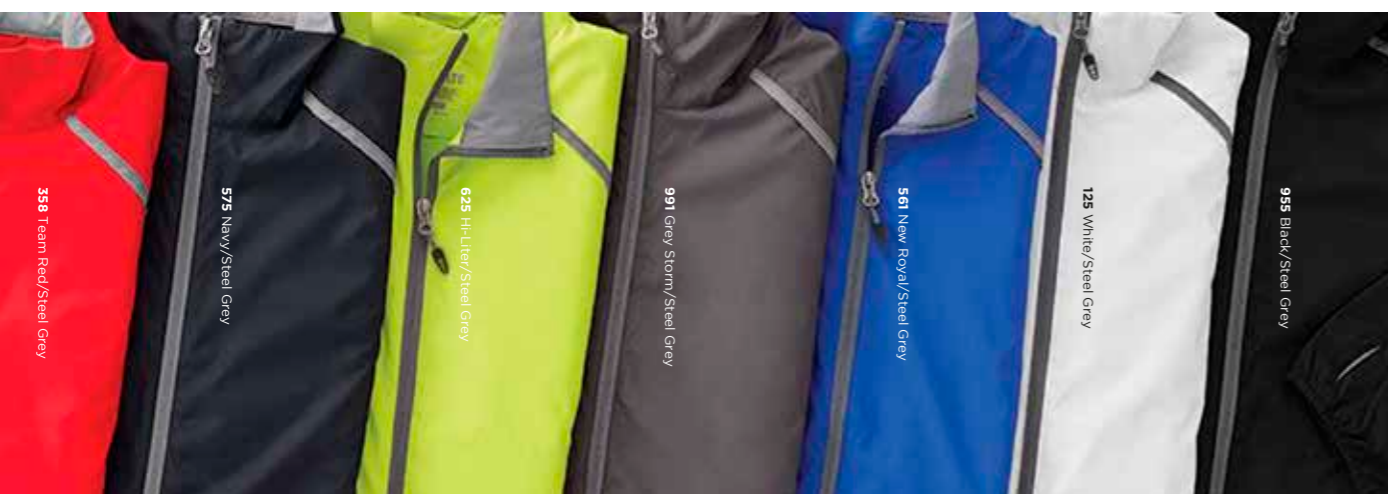


WIND  
RESISTANT



WIND  
RESISTANT

up to  
**5XL**





234 Yellow



358 Team Red



384 Maroon



575 Navy



640 Forest Green



945 Steel Grey



995 Black



561 New Royal



shieldtech

Protect yourself from wind and rain. This technology offers complete comfort in a variety of conditions.

Roll-away hood with elasticized opening



## flint lightweight jacket

**12604** Men's (S - 5XL)  
**92604** Women's (XS - 3XL)

up to  
5XL

### features

- › Centre front contrast reverse coil zipper
- › Diminishing reflective piping at back shoulder
- › Upper and lower invisible zipper pocket
- › Elasticized sleeve cuffs with thumb exit
- › Contrast bartacks at pockets, thumbhole exit & back vents
- › Ergonomic sleeves
- › Back vent

### fabric

Outer Shell: 100% Polyester 240T with water resistant coating and water repellent finish. 80 g/m<sup>2</sup> (2.4 oz/yd<sup>2</sup>).

### recommended decoration

**E** Embroidery **T** Transfer **D** Deboss



# Fleeces & Knits



## tremblant knit jacket

**18610** Men's (S - 5XL)

**98610** Women's (XS - 3XL)

### features

- › Contrast binding on collar, sleeve cuffs & body hem
- › Contrast coverstitching
- › Interior media exit port with cord guide
- › Centre front exposed contrast reverse coil zipper
- › Drop back hem

### fabric

Outer Shell: 100% Polyester sweater knit with brushed back 305 g/m<sup>2</sup> (9 oz/yd<sup>2</sup>).

Lining: 100% Polyester brushed tricot knit inner zipper flap and pocket bags.

### recommended decoration

**E** Embroidery **T** Transfer



### WOMENS



**994** Black Smoke Heather



**922** Light Heather Grey



**550** Metro Blue Heather



**384** Maroon Heather



**684** Loden Heather

### BACK VIEW



## garner knit full zip hoody

**18731** Men's (S - 3XL)  
**98731** Women's (XS - 2XL)

### features

- › Centre front exposed metal zipper with contrast
- › Interior media pocket
- › Front kangaroo pouch pocket

### fabric

65% Polyester/35% Cotton slub yarn jersey knit.  
180g/m<sup>2</sup> (5.3oz/yd<sup>2</sup>).

Contrast: 62% Polyester/35% Cotton/5% Spandex slub yarn 1x1 rib knit sleeve cuffs and body hem.

### recommended decoration

**E** Embroidery **T** Transfer





## caltech knit quarter zip

**17807** Men's (S - 3XL; 4XL - 5XL\*)

**97807** Women's (XS - 2XL; 3XL\*)

up to  
**5XL\***  
selected  
colours

### features

- › Superior stretch and comfort
- › Centre front zipper with contrast teeth and autolock zipper pull
- › Interior zipper flap
- › Coverstitching on seams
- › Heat transfer label for tagless comfort
- › Dropped back hem

### fabric

87% Polyester, 13% Spandex jersey knit.  
222g/m<sup>2</sup> (6.6 oz/yd<sup>2</sup>).

### recommended decoration

**E** Embroidery **D** Deboss **L** Laser



MODERN FIT



STRETCH

Fabric content provides stretch allowing for a more comfortable fit.

Autolock zipper pull



**431** Olympic Blue



**945** Steel Grey\*



**995** Black\*

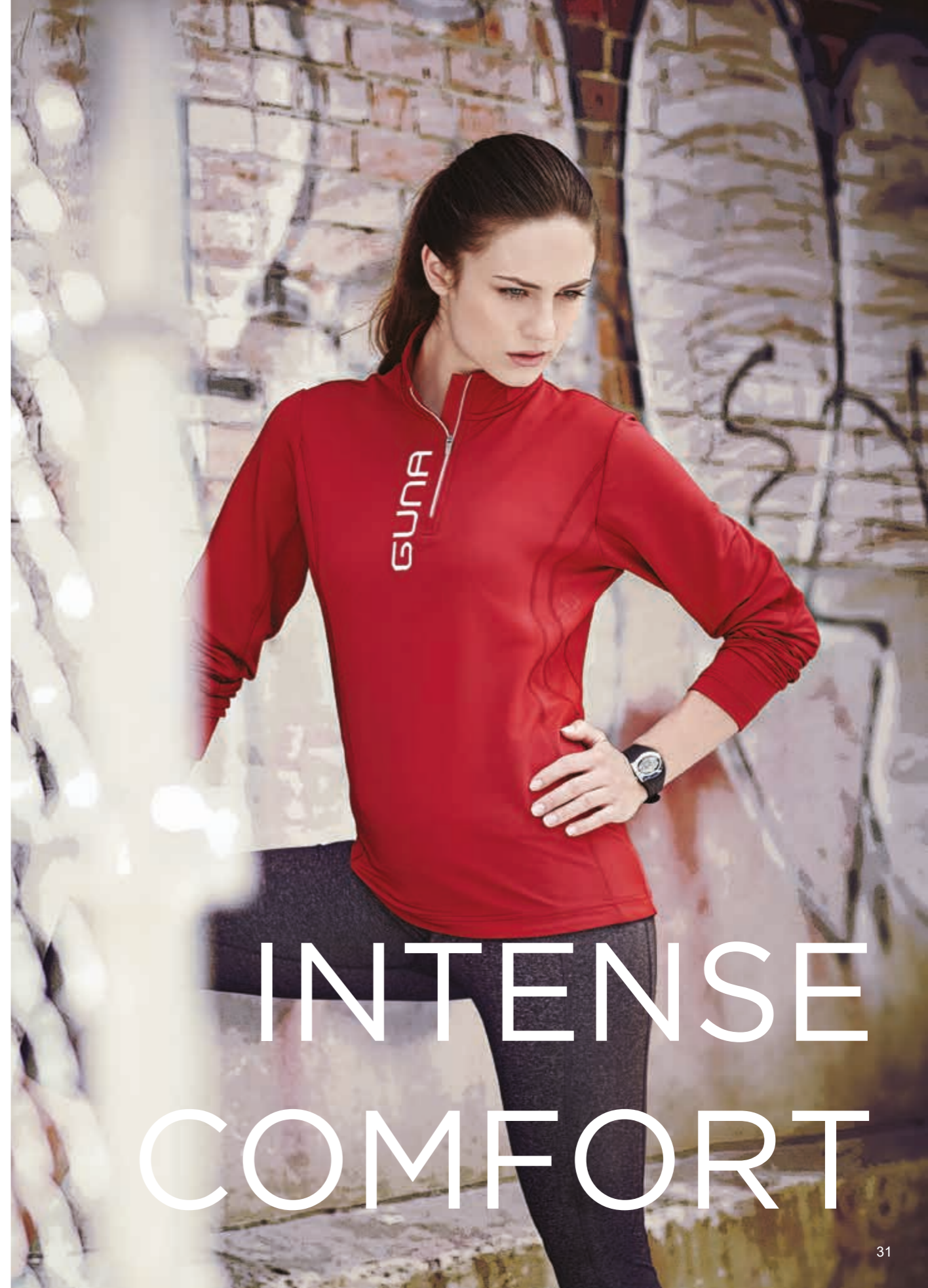


**575** Navy\*



**369** Vintage Red

Back and underarm graphic details



# INTENSE COMFORT



430 Aspen Blue Heather

WOMENS

927 Silver Heather



BACK VIEW



561 New Royal Heather

653 Apple Heather



358 Team Red Heather

988 Heather Dark Charcoal

## taza knit quarter zip

**17810** Men's (S - 5XL)  
**97810** Women's (XS - 3XL)

up to  
5XL

### features

- › Centre front exposed contrast reverse coil zipper
- › Autolock zipper pull
- › Zipper garage centre front feature
- › Exterior media cord guide

### fabric

100% Micro polyester cross dyed jersey knit with anti-microbial and wicking finish. 150g/m<sup>2</sup> (4.4 oz/yd<sup>2</sup>).

### recommended decoration

**E** Embroidery **T** Transfer **D** Deboss **L** Laser



WEBTECH™



UV PROTECTION



SNAG RESIST



ANTI-MICROBIAL



## anti-microbial

Unique finish that controls bacteria growth, prevents odours and maintains garment freshness.



# polos



## mori long sleeve polo

**16255** Men's (S - 5XL)

**96255** Women's (XS - 3XL)

### features

- > Flat knit collar
- > Contrast interior stitching detail on body & sleeve hem
- > Shirt tail hem (women's)
- > Narrow twin needle topstitch detail at placket, shoulders, body & sleeve hem.

### fabric

Outer Shell: 100% Polyester textured knit with wicking finish 155g/m<sup>2</sup> (4.6 oz/yd<sup>2</sup>).

Contrast: 100% Polyester flat knit collar.

### recommended decoration

**E** Embroidery **T** Transfer **D** Deboss **L** Laser



BACK VIEW



**358** Team Red



WOMEN'S

**431** Olympic Blue



**955** Black



**945** Steel Grey



**125** White



**640** Forest Green



**575** Navy

M/M  
CA 19737 RN 137770



## SNAG RESIST

An engineered snag resistant fabric that is breathable and creates a polished look.

356 Red/Steel Grey

995 Black/White

125 White/Steel Grey

945 Steel Grey/White

431 Olympic Blue/White

575 Navy/White

## VERSATILE COLOURS

Complete your look with Kiso's versatile palette of complementary colours and neutral contrast details.



## kiso short sleeve polo

16209 Men's (S - 5XL)

96209 Women's (XS - 3XL)

### features

- › Three-button placket
- › Coverstitch detail
- › Contrast inner placket
- › Flat knit collar
- › Contrast interior stitching

### fabric

100% Micro polyester textured knit with wicking finish.  
150g/m<sup>2</sup> (4.4 oz/yd<sup>2</sup>).

Contrast: 100% Polyester flat knit collar.

### recommended decoration

**E** Embroidery **T** Transfer **D** Deboss **L** Laser



icon index



Moisture management is achieved at the YARN stage, where the microfine yarns create a capillary action to channel sweat away.



The skillful blending of natural and man-made yarns results in fabrics that have easy properties.



Stay warm and feel comfortable with a breathable insulated membrane, and resistance barrier to extreme elements.



Unique finish that controls bacteria growth, prevents odours and maintains garment freshness.



Fabric is engineered to prevent snagging.



A treatment applied to fabric that resists the formation of little balls or pills on the surface of the garment.



Products allow moisture to escape from the body.



Unique yarns or fabric finishes that transport moisture to the outer surface.



Products made of waterproof materials and fully seam sealed to keep moisture out.



Permanently covering the inner seams with waterproof tape for long lasting waterproof protection.



The fabric sits closer to the body in the torso & sleeves for an athletic look.



Fabric surface is treated to repel water.



Protect yourself from wind and rain. This technology offers complete comfort in a variety of conditions.



Fabric finishes are used to resist moisture penetration.



Fabric content provides stretch allowing for a more comfortable fit.



Product helps prevent wind from penetrating.



Microscopic water droplets are transported into the atmosphere and are dispersed into the air.



Inside opening for easy decorating access.



Three materials of differing characteristics are joined together, creating a composite fabric with superior performance.



Product provides protection from UV rays. UPF value represents the fractional amount of the sun's harmful UV rays that pass through fabric.

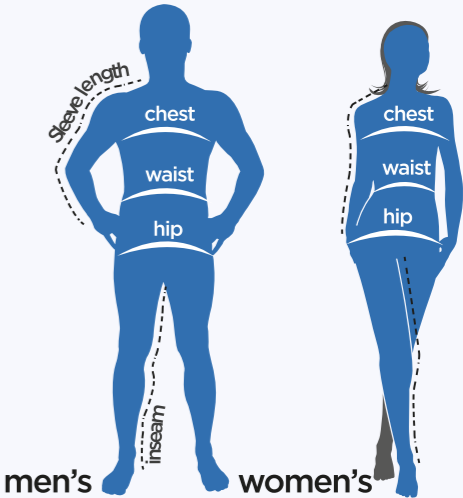
sizing chart

We encourage the use of sizing samples to have a more accurate sizing for our styles. To that end we offer samples at a reduced price. There is no extra charge on the larger sizes for in-stock items.

Tops & Jackets										
Men's/Unisex		XS	S	M	L	XL	2XL	3XL	4XL	5XL
to fit neck	(cm)	33 - 34.5	35.6 - 36.8	38.1 - 39.4	40.6 - 41.9	43.2 - 44.5	44.5 - 45.7	47 - 48.3	49.5 - 50.8	52.1 - 53.3
to fit chest	(cm)	83.8 - 88.9	91.4 - 96.5	99.1 - 104.1	106.7 - 111.8	114.3 - 121.9	124.5 - 132.1	134.6 - 142.2	144.8 - 152	154.9 - 162.6
to fit sleeve length	(cm)	81.3	83.8 - 85.1	86.4 - 87.6	88.9 - 90.2	91.4 - 92.7	94 - 95.3	96.5 - 97.8	97.8 - 99.1	99.1 - 100.3
to fit sleeve tall	(cm)				94 - 95.3	96.5 - 97.8	99.1 - 100.3	101.6 - 102.9	102.9 - 104.1	104.1 - 105.4
Women's		XS	S	M	L	XL	2XL	3XL		
sizing reference		2-4	6-8	10-12	14-16	18	20	22+		
to fit chest	(cm)	76.2 - 81.3	83.8 - 88.9	91.4 - 96.5	99.1 - 104.1	106.7 - 111.8	114.3 - 119.4	121.9 - 127		
to fit sleeve length	(cm)	74.9 - 76.2	76.2 - 77.5	78.7 - 80	81.3 - 82.6	82.6 - 83.8	83.8 - 85.1	85.1 - 86.4		

Chest  
Under the arms and across the shoulder blades with a firm and level tape.

Sleeve length  
Relax arm, and measure from the centre of the back of the neck, over the shoulder and down to the outer wrist.



# TRIMARK

**“LIFE IS SPORT AND SPORT LIVES IN LIFE”**

[www.thecatalogue.co.nz](http://www.thecatalogue.co.nz)

Member of



**Polyconcept**  
SupplyTeam network